

Citrine-Olsson JV

Small Disadvantaged Business (SDB)

Service-Disabled Veteran-Owned Small Business (SDVOSB)

HUBZone Certified

Unique Entity ID:
JQZRS766NY37

CAGE Code: 9PP85

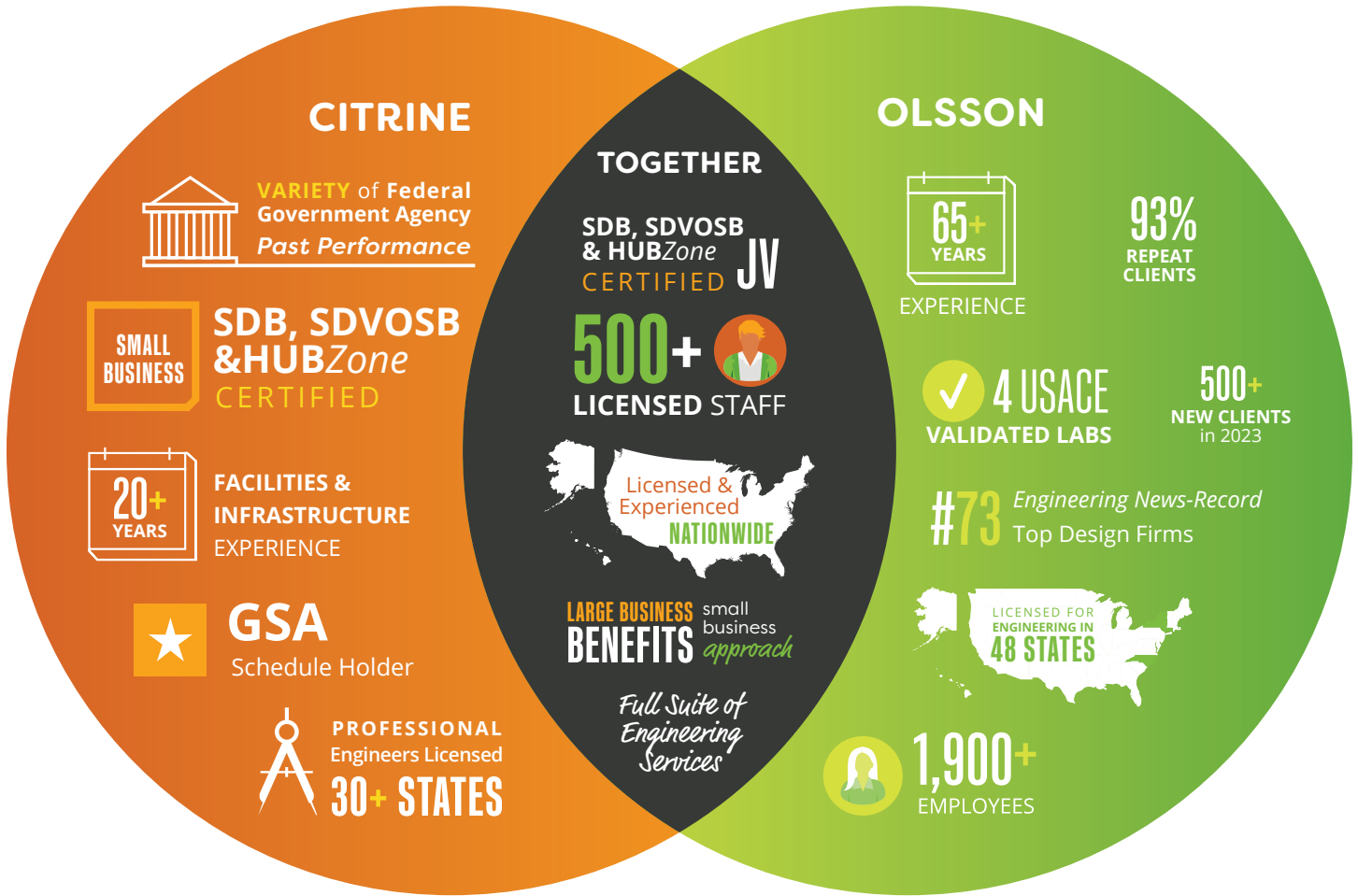


Citrine® | **olsson**®

Mentor-Protégé Joint Venture of Citrine and Olsson

Ready • Reliable • Resilient

DIFFERENTIATORS



Core Competencies

PLANNING & DESIGN	ENGINEERING	ENVIRONMENTAL	TECHNOLOGY	OTHER UNIQUE SERVICES
<ul style="list-style-type: none"> • Architecture • Community Planning • Landscape Architecture • Master Planning • Network Planning • Program Management • Site Design • Transportation Planning 	<ul style="list-style-type: none"> • Site/Civil • Electrical • Facilities & Infrastructure • Geotechnical • Mechanical • Power • Rail • Structural • Transportation • Wastewater • Water Resources 	<ul style="list-style-type: none"> • Air Quality • Surveys & Permitting • Environmental Planning & Permitting • Hydrogeology • Natural Resource Surveys & Assessments • NEPA • Remediation • Soil Profiling 	<ul style="list-style-type: none"> • Geographic Information Systems • Intelligent Transportation Systems • Project Visualization • Security • Telecommunications • Traffic Management Systems • Utility & Industrial Automation 	<ul style="list-style-type: none"> • Arc Flash Survey & Design • Backflow Survey • Commissioning • Construction Management • Cost Estimating • Drilling • Materials Testing • Nondestructive Testing • Special Inspections • Surveying • Training



**ENGINEERING AND
CONSTRUCTION ESTIMATING,
CARROLLTON WATER FACILITY**

Sewage and Water Board
of New Orleans
New Orleans, LA

**RELIABILITY STUDIES CHEYENNE
MOUNTAIN AIR FORCE STATION**

U.S. Air Force
Colorado Springs, CO

ARC FLASH STUDIES

GSA Region 6 & 10
MO, IA, NE, OR, WA, AK

ARC FLASH TRAINING

Western Area Power Administration
Various Locations

National Institute of Standards
and Technology
Washington, D.C.

Department of Veterans Affairs
Las Vegas, NV and Perry Point, MD

**BACKFLOW PREVENTION
DEVICE SURVEY JOINT BASE
ELMENDORF-RICHARDSON**

U.S. Air Force
Richardson, AK

ELECTRICAL SURVEY

Malmstrom Air Force Base
Cascade County, MT

RECOMMISSION POWER STUDY

National Oceanic and
Atmospheric Administration
Wallops Island, VA

**DESIGN-BUILD REPLACEMENT
HOSPITAL**

USACE Kansas City
Fort Leonard Wood, MO

**BANNISTER FEDERAL COMPLEX
REDEVELOPMENT PROGRAM**

Bannister Transformation
& Development LLC
Kansas City, MO

GEOTECHNICAL INVESTIGATION

Buckley Space Force Base
Aurora, CO

**SALT CREEK LEVEE
DRAINAGE STRUCTURES**

Lower Platte South Natural
Resources District (NRD)
Lincoln, NE

**TRAIL & BRIDGE DESIGN FOR
FOUR BRIDGES ON THE OHIO
& ERIE TOWPATH TRAIL**

Federal Highway Administration
Summit County, OH

**DESIGN-BUILD RFP DEVELOPMENT
FOR MILITARY READINESS CENTER**

Oklahoma Military Department
Ardmore, OK

HVAC UPGRADES

Supreme Court
Jefferson City, MO

**MUNITIONS STORAGE
AREA (MSA) DRAINAGE**

Whiteman Air Force Base
Johnson County, MO

**ELECTRONIC HEALTH RECORD
MODERNIZATION (EHRM)**

INFRASTRUCTURE UPGRADES
John J. Pershing VA Medical Center
Poplar Bluff, MO

**AGRICULTURAL RESEARCH
SERVICE BUILDING EXPANSION**

USACE Omaha
USDA
Lincoln, NE

**EBI REPLACEMENT STUDY
AND DESIGN**

NOAA
Wallops Island, VA

ARC FLASH ANALYSIS

Department of Labor
Job Corps
*Nationwide (114 sites including all
50 states, the District of Columbia
and Puerto Rico)*

**ELECTRIC VEHICLE
FEASIBILITY STUDIES**

Department of Veterans Affairs
Multiple State Locations



**DESIGN-BUILD NGA
SUBSTATION ELECTRICAL
SUBSTATION REPLACEMENT**

USACE Kansas City
Arnold, MO

**DESIGN-BUILD
CHILD DEVELOPMENT CENTER**

USACE Tulsa
Sheppard Air Force Base, TX

DESIGN-BUILD SECURITY CAMPUS

USACE Omaha
Offutt Air Force Base, NE

**DESIGN-BUILD ROOF
REPLACEMENT**

USACE Tulsa
Tinker Air Force Base, OK

**DESIGN-BUILD RENOVATE
TACTICAL EQUIPMENT
MAINTENANCE FACILITY (TEMF)**

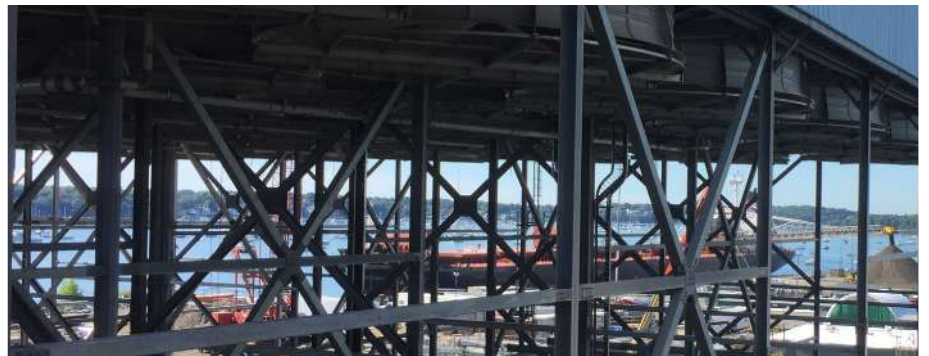
USACE Kansas City
Fort Riley, KS

**OPERATIONS SUPPORT
SQUADRON SERE OPERATIONS**

USACE Omaha
Offutt AFB, NE

LIGHTING RETROFIT

Joint Base San Antonio
Lackland Air Force Base, TX



**RENOVATE RECRUIT HOUSING
& TRAINING DORMITORY
AND DINING FACILITY**

Joint Base San Antonio
Lackland Air Force Base, TX

**REPAIR NAVY TECHNICAL
TRAINING DORMITORY**

Joint Base San Antonio
Lackland Air Force Base, TX

**STORM DRAINAGE STUDY
AND DESIGN - MARINE
CORPS MOUNTAIN WARFARE
TRAINING CENTER**

NAVFAC Southwest
Bridgeport, CA

**POINT LOMA ROAD
WIDENING AND REPAIR**

NAVFAC Southwest
San Diego, CA

**MARINE CORPS MOUNTAIN
WARFARE TRAINING
CENTER REPAIR**

NAVFAC Southwest
Bridgeport, CA

AIRFIELD DISTRICT PLAN

Vance Air Force Base
Enid, OK

CONTACT INFORMATION

Jeff Abbate

Principal
509.308.7675
jeffa@citrinellc.com

Shannon Rasmussen

Principal
720.272.1253
shannonr@citrinellc.com

Elizabeth (Liz) Poe

CEO
505.417.7151
lizp@citrinellc.com

citrinellc.com

Mark Himes, PE

Federal Market Leader
531.938.2465
mhimes@olsson.com

olsson.com

Agencies/Installations we have worked with:

AGENCIES

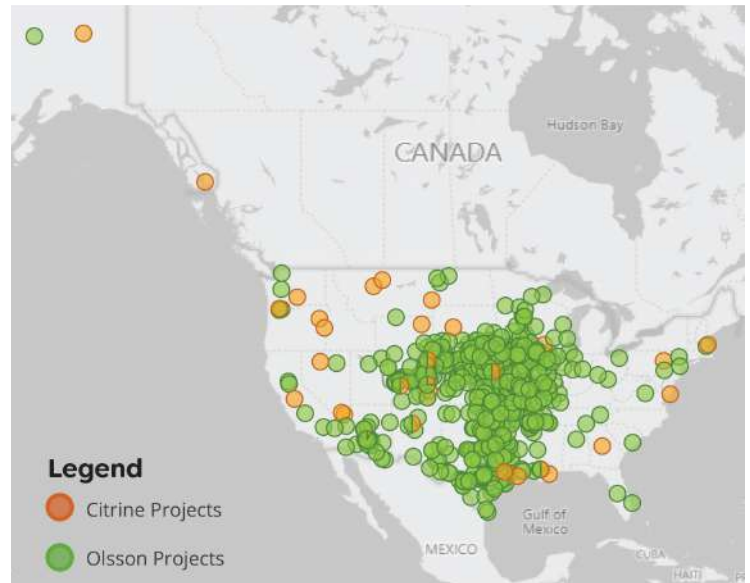
- Air National Guard
- Army National Guard
- Bureau of Land Management
- Department of Energy/Western Area Power Administration
- Department of Justice
- Department of Veterans Affairs
- Federal Highway Administration
- Federal Bureau of Investigations
- Federal Bureau of Prisons
- General Services Administration
- National Institute of Standards and Technology
- National Park Service
- National Oceanic and Atmospheric Administration
- U.S. Army Corps of Engineers
- U.S. Army Reserve Command, 88th Readiness Division
- U.S. Fish and Wildlife Service
- U.S. Postal Service

RECENT INSTALLATIONS

- Buckley Space Force Base
- Camp Ashland
- Camp Gruber
- Davis Monthan Air Force Base
- Fort Huachuca
- Fort Leavenworth
- Fort Leonard Wood
- Fort Riley
- Joint Base Elmendorf-Richardson
- Joint Base San Antonio
- Lackland Air Force Base
- Luke Air Force Base
- Malmstrom Air Force Base
- McConnell Air Force Base
- Minot Air Force Base
- Offutt Air Force Base
- Randolph Air Force Base
- Sheppard Air Force Base
- Tinker Air Force Base
- Vance Air Force Base
- Whiteman Air Force Base

NAICS Codes

- | | |
|--------------------|----------|
| • 541330 (primary) | • 541420 |
| • 238210 | • 541611 |
| • 238220 | • 541620 |
| • 323113 | • 541690 |
| • 323120 | • 541715 |
| • 541310 | • 541990 |
| • 541320 | • 561210 |
| • 541340 | • 561910 |
| • 541350 | • 611430 |
| • 541370 | • 611513 |
| • 541380 | • 611519 |
| • 541410 | • 611699 |



CONTRACT VEHICLES

USFWS MATOC, U.S. FISH AND WILDLIFE SERVICE –
VARIOUS LOCATIONS THROUGHOUT THE UNITED STATES
Period of Performance: 2022 – 2027

UNITED STATES DEPARTMENT OF AGRICULTURE (USDA) –
FOREST SERVICE (FS) SHORT SELECTION LIST, REGION 8
Period of Performance: 2022 – 2024

USACE FT. WORTH DISTRICT AE MATOC
Period of Performance: 2023 – 2030

DYESS AIR FORCE BASE AE IDIQ
Period of Performance: 2023 – 2028